



MEICO

PRODUCT PORTFOLIO

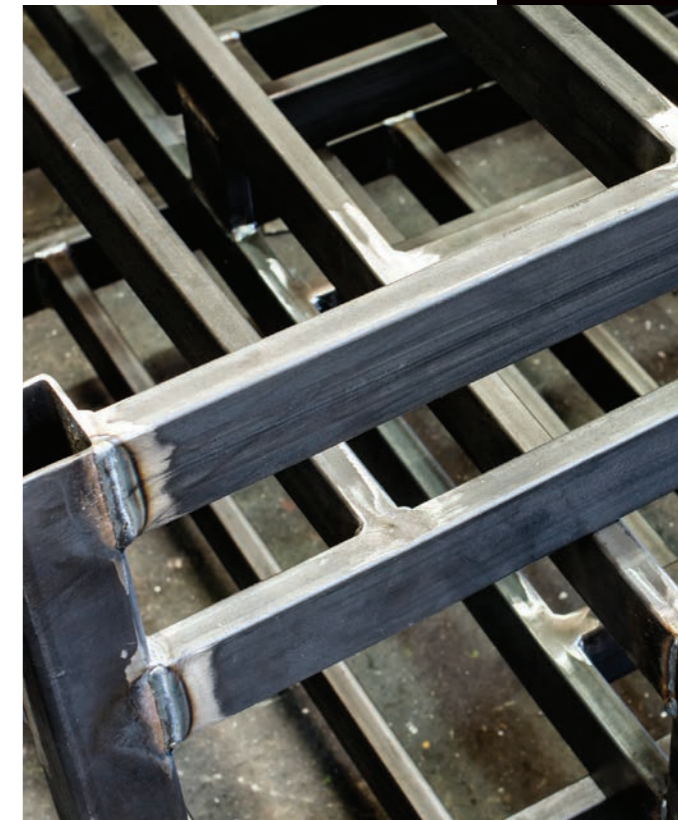
We take responsibility

Main activities

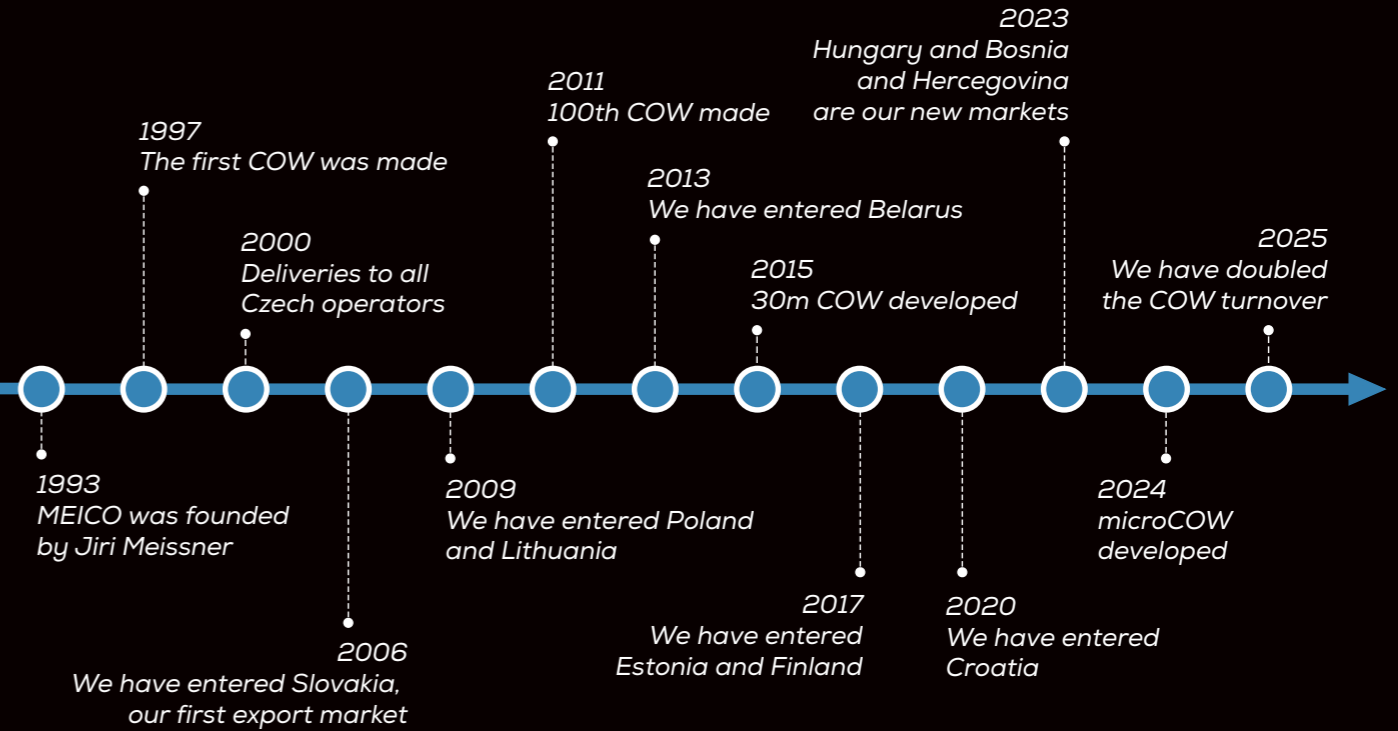
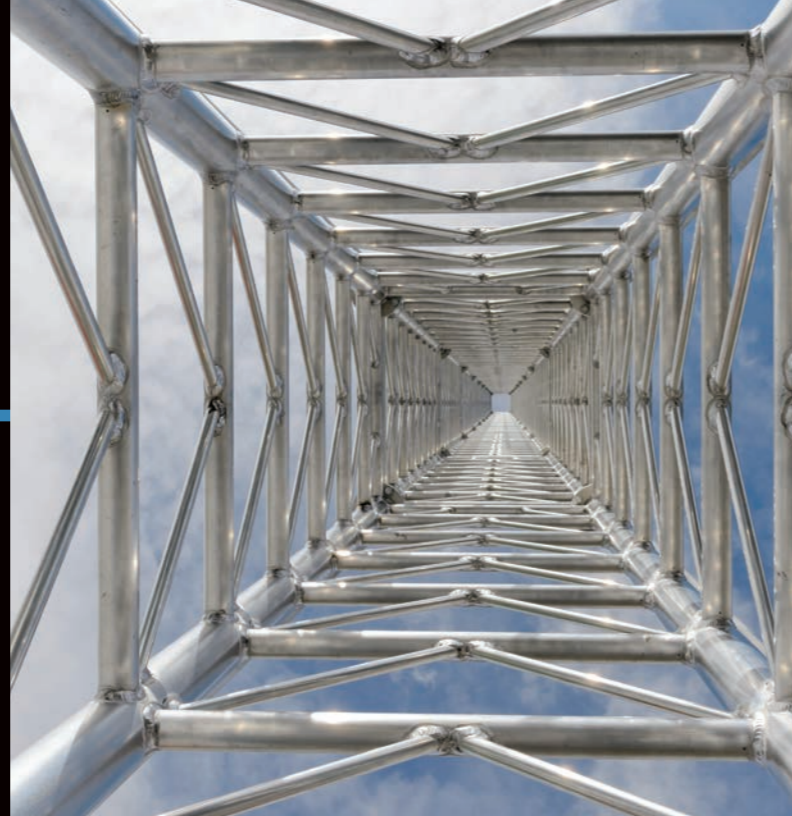
Health & safety

Cell on wheels

Steel structures



MEICO timeline



Key figures



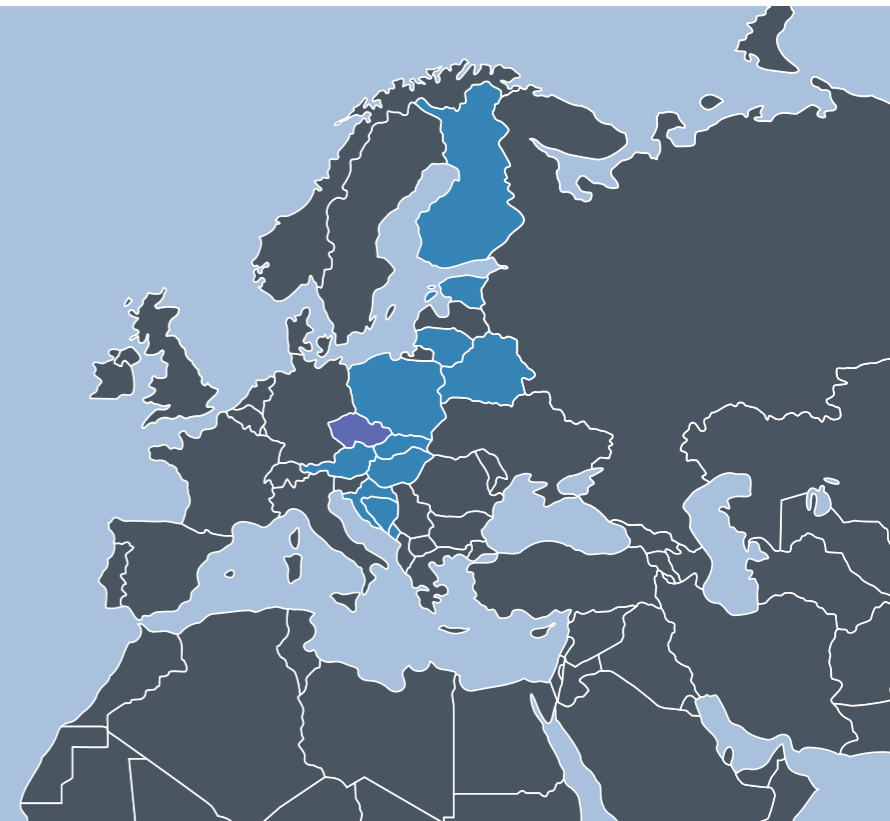
61
MOBILE
OPERATORS

31
COUNTRIES
COVERED

15
COW
MODELS



COMPANY REVENUE DISTRIBUTION



Key attributes

Compactness

*(everything transported altogether,
no crane or additional equipment required)*

Easy deployment

*(at a very short time, on whatever place,
with/without electrical power network)*

Maximum adjustability

*(variable heights, modular interior,
indoor/outdoor solution)*

Lifespan 20+ years

*(annual maintenance for long-term operation,
upgrades in case of changes in use, takeover of COWs
from other suppliers like Elliot, Cue Dee etc.)*



microCOW

Deployment time: <30 minutes (2 workers)
Antenna surface area: up to 2 m²
Headload: 70–100 kg
Total height: 8–11 m
Dimensions: 1,6. x 1,2 x 2,5 m
Footprint: From 2.2 x 2.2 m
Wind speed: 24 m/s
Total weight: 600–1.200 kg



COW11 - COW20

Total height: up to 20 m
Deployment time: max. 1-2 hours (2 workers)
Antenna surface area: up to 3 m²
Headload: up to 180 kg
Dimensions: up to 4.0 x 2.5 x 3.4 m
Footprint: from 4.2 x 4.2 m
Wind speed: 24 m/s (up to 36 m/s)
Total weight: < 3.5 t



- Microwave antenna rotator
60° vertically – 60° horizontally

- Pneumatic telescopic mast
- No climbing or crane necessary
- Adjustable height up to 20 m

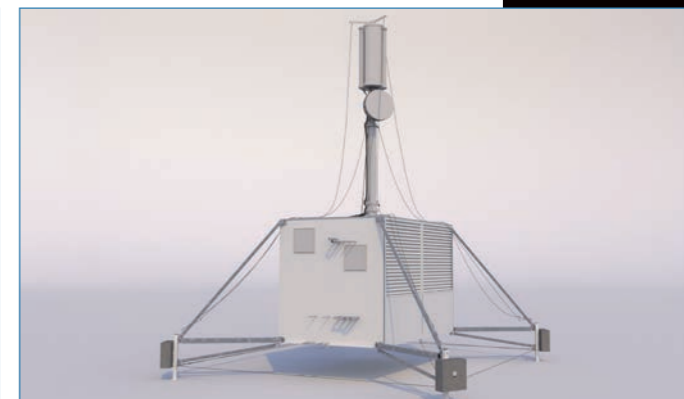
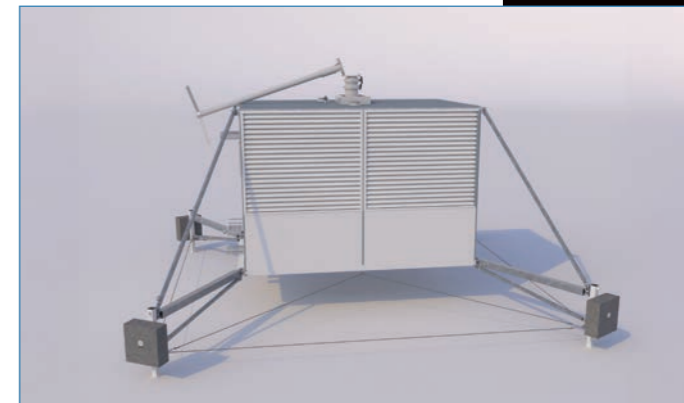
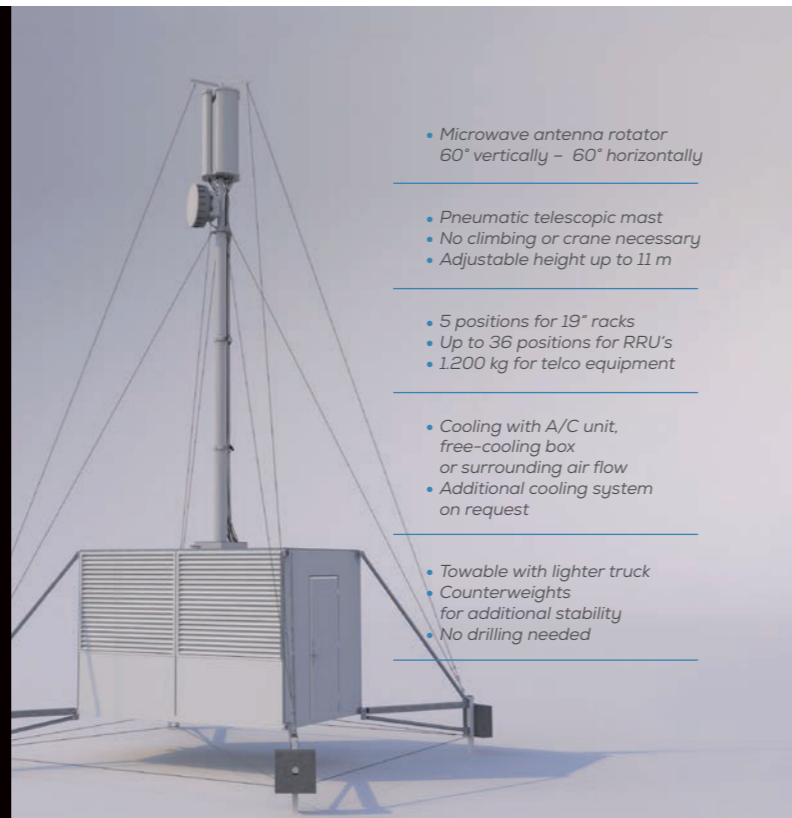
- 3 positions for 19" racks
- Up to 36 positions for RRU's
- Cooling with A/C unit,
free-cooling box or
surrounding air flow
- Additional cooling system
on request

- Towable with SUV
- Removable chassis
as an option
- Counterweights
for additional stability
- No drilling needed



COW11 HD

Total height: up to 11 m
Deployment time: 2 hours (2 workers)
Antenna surface area: 3 m²
Headload: 220 kg
Dimensions: up to 4.0 x 2.5 x 3.4 m
Footprint: 6.0 x 6.0 m
Wind speed: 24 m/s (up to 36 m/s)
Total weight: < 7 t



COW15 COMPACT

Total height: up to 15 m
Deployment time: 2 hours (2 workers)
Antenna surface area: 2,3 m²
Headload: 180 kg
Dimensions: 3.6 x 2.5 x 2.6 m
Footprint: 6.0 x 6.0 m
Wind speed: 24 m/s (up to 41 m/s)
Total weight: < 3.5 t



- Microwave antenna rotator
60° vertically – 60° horizontally

- Pneumatic telescopic mast
- No climbing or crane necessary
- Adjustable height up to 15 m

- 4 positions for 19" racks
- Inbuilt Diesel generator

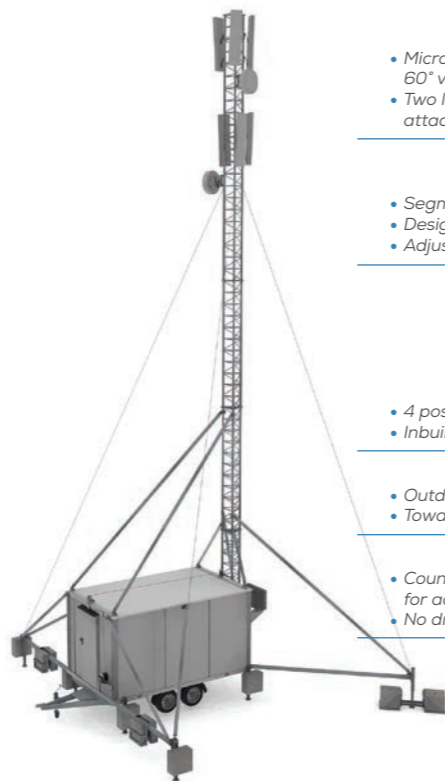
- Weather louvers for cooling with outside air
- Towable with SUV
- Intermodal transportation (rail, truck, ship, plane) possibility

- Counterweights for additional stability
- No drilling needed



COW TPS18

Total height: up to 18 m
Deployment time: 2 hours (2 workers)
Antenna surface area: 3 m²
Headload: 200 kg
Dimensions: approx. 4,5 x 2,5 x 3,9 m
Footprint: 8,0 x 8,0 m
Wind speed: 24 m/s (up to 41 m/s)
Total weight: < 3,5 t



- Microwave antenna rotator
60° vertically – 60° horizontally
- Two levels of antennas
attachment

- Segmental lattice mast
- Designed for climbing
- Adjustable height up to 18 m

- 4 positions for 19" racks
- Inbuilt Diesel generator

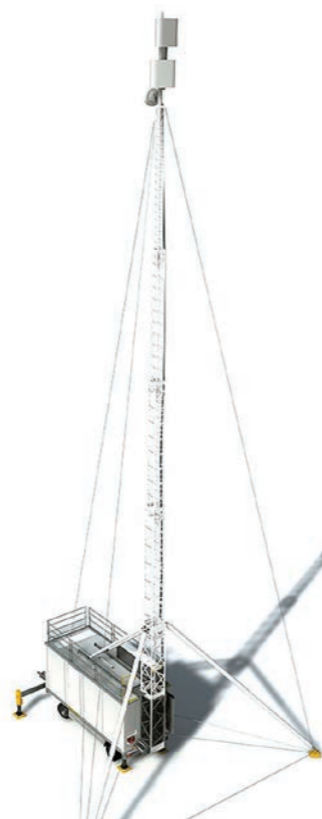
- Outdoor/indoor solution
- Towable with SUV

- Counterweights
for additional stability
- No drilling needed



COW30

Total height: up to 30 m
Deployment time: 4 hours (2 workers)
Antenna surface area: 2.5 m²
Headload: 300 kg
Dimensions: 6.2 x 2.5 x 4.0 m
Footprint: 12.5 x 12.5 m
Wind speed: 24 m/s (up to 40 m/s)
Total weight: < 11.9 t



- Microwave antenna rotator
60° vertically – 60° horizontally

- Lattice telescopic mast
- No crane necessary for installation
- Adjustable height up to 30 m
- Double protection against accidental slide
- Designed for climbing

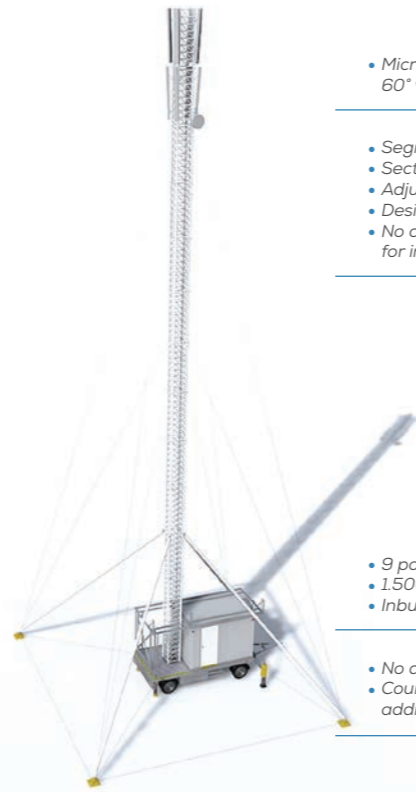
- 9 positions for 19" racks
- 1.500 kg for telco technologies
- Inbuilt Diesel generator

- No drilling needed
- Counterweights for additional stability



COW TPS30

Total height: up to 30 m
Deployment time: 8 hours (4 workers)
Antenna surface area: 2.5 m²
Headload: 300 kg
Dimensions: 6.2 x 2.5 x 4.0 m
Footprint: 12.5 x 12.5 m
Wind speed: 24 m/s (up to 40 m/s)
Total weight: < 11.9 t



- Microwave antenna rotator
60° vertically – 60° horizontally

- Segmental lattice mast
- Sections of 2.2 m
- Adjustable height up to 30 m
- Designed for climbing
- No crane necessary for installation

- 9 positions for 19" racks
- 1.500 kg for telco technologies
- Inbuilt Diesel generator

- No drilling needed
- Counterweights for additional stability



COT18

Total height: up to 18 m
Deployment time: 2 hours (2 workers)
Antenna surface area: 2 m²
Headload: up to 120 kg
Dimensions: 6.5 x 2.5 x 3.9 m
Footprint: from 6.5 x 6,5 m
Wind speed: 24 m/s (up to 42 m/s)
Total weight: < 11.9 t



- Microwave antenna rotator
60° vertically – 60° horizontally

- Pneumatic telescopic mast
- No climbing or crane necessary
- Adjustable height up to 18 m

- 3 positions for 19" racks
- Inbuilt Diesel generator

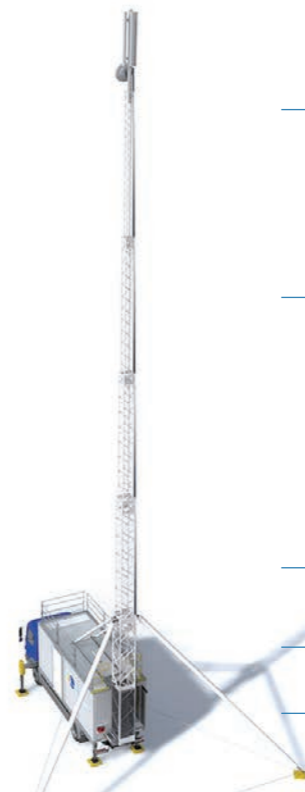
- Off-road truck 4x4 for hardly accessible terrain
- 1.000 kg for telco equipment

- No drilling needed
- Hydraulic supports on request



COT30

Total height: 30 m
Deployment time: 4 hours (2 workers)
Antenna surface area: 2.5 m²
Headload: 300 kg
Dimensions: 3.8 x 2.5 x 4.0 m
Footprint: 12.5 x 12.5 m
Wind speed: 24 m/s (up to 40 m/s)
Total weight: < 16 t



- Microwave antenna rotator
60° vertically – 60° horizontally

- Lattice telescopic mast
- No crane necessary
for installation
- Adjustable height up to 30 m
- Double protection against
accidental slide
- Designed for climbing

- 9 positions for 19" racks
- 1.500 kg for telco technologies
- Inbuilt Diesel generator

- Off-road truck 4x4 for hardly
accessible terrains

- No drilling needed



Remote monitoring

Alarms

(intrusion, excessive temperature, fire, vandalism...)

Generator monitoring

(engine hours, battery voltage, power output...)

Fuel level monitoring

State of air conditioning



DIESEL GENERATORS

- Water/air cooled diesel generators (Made in Germany)
- Silent run thanks to sound-proof capsule
- Life-span up to 20 000 run-time hours
- Compact dimensions from 950 x 540 x 625 mm
- Adjustment for COMAP control systems



Masts

Lattice masts ready to bear high loads
(300 kg and more)

Telescopic as well as segmental options
(height 18 m and 30m)

Made of special aluminium alloy

Footprint 12 x 12 m

Customization per request



Mw remote control

Multi-fix frame for fixing various MW antennas

Four directions of MW antenna setting

Left, right, up and down move

Controlled remotely



Removable chassis

One chassis serves a number of COWs

Cost-optimized option

Easy disassembly and pull-out

EU vehicle approval



Maintenance, Deployment

Regular annual maintenance

Extended warranty

Deployment supervision

Training for operation
and maintenance

Helpdesk 24/7



Pre-sales service



Drawings
3D visualizations



Electrical revision
in line with local
regulation

Local execution of
Technical Inspection



Upgrades of COW



10-year spare
parts availability
guaranteed

Structural analysis

Concept of equipment
distribution



Proposal of
suitable diesel
generator output



Regular annual
maintenance

Repairs & restoration



Initial training course



References

 T-Mobile®

Czech Republic
Slovakia
Poland
Croatia
Bosnia and Hercegovina
Montenegro

 O₂

Czech Republic
Slovakia

 **vodafone**

Czech Republic
Hungary

 orange™

Slovakia
Poland

 **CETIN**
ČLEN SKUPINY PPF

Czech Republic

 elisa

Estonia
Finland

 era

Czech Republic

 MTC

Belarus

 A¹

Belarus

 Telia

Lithuania
Estonia

 pracom

Czech Republic

 SWAN

Slovakia

 cellnex

Poland



MEICO

www.meico.cz